

# NEON ARC

TUNEABLE WHITE | SILICONE

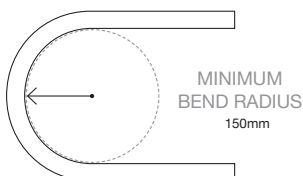
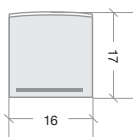
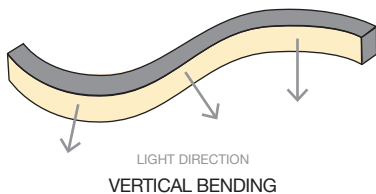


PHOTO CREDIT: BEN WRIGLEY, COURTESY WWW.CREATIVEROAD.COM.AU

Neon Arc is a square W16 x H17mm, vertical bending model perfect for cove lighting, or architectural features in exterior and interior applications.

Tuneable White lighting can be adjusted to suit the environment and time of day. Warmer temperatures create a cosy feel that is perfect for evenings, while cooler temperatures simulate day light, creating a more alert feel.

Neon is made to order, check with our team for lead times.



CODE	COLOUR	LUMENS
BL-LS-4825S	WARM WHITE 2200K +/- 160K	≥220lm/m
	COOL WHITE 5700K +/- 285K	≥270lm/m

ELECTRICAL & OPTICAL DATA VARIANCE +/- 10%. SOLD BY THE METRE. IES FILES AVAILABLE.

#### POWER & TEMP

LED WATTS	12W/m
INPUT VOLTS	24V DC Constant voltage
OPERATING TEMP. (ENVIRONMENT)	-40°C ~ +55°C
MAX. RUN PER POWER FEED	15m using one feed 30m using two feeds

#### LIGHT & LIFE

CRI	≥80
BEAM ANGLE	160°
LED PER METRE	144
SOURCE LIFE	50,000 hours
WARRANTY	5 years

#### APPLICATIONS

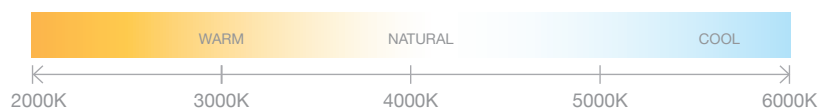
- Ideal for applications where colour temperature adjustment is required
- Cove lighting, handrails, or toe-kicks
- Architectural features
- Exterior or interior installations
- Swimming or feature pools

#### FEATURES

- Neon Arc can be curved in the opposite direction of the other neon products
- UV & flame resistant

#### PHYSICAL PARAMETERS & CONTROL

MINIMUM BEND RADIUS	150mm
BEND DIRECTION	Vertical bending
DIMENSIONS	W16 x H17mm
INGRESS PROTECTION	IP67 or IP68 Protection established by use of connectors. <i>Dimensions of connectors shown on installation guide</i> SEE PAGE 2.
CUTTING LENGTH	83.3mm
HOUSING	UV & flame resistant white silicone with opal diffuser
MOUNTING	Profile / clips available SEE PAGE 3.
CONTROL	Requires 2-channel controller



## NEON ARC | TUNEABLE WHITE | CONNECTIONS

Neon products are IP rated based on the fitted connections (power feed / end caps).

Bright Light recommend using Slimline injection moulding for the best result, a clean finish and IP68 rating. These are fitted at factory during the production process and can not be altered once produced - **ensure all lengths are double-checked before ordering.**

Power feed connectors are priced & supplied with 1metre cable as standard. Please specific at time of quoting if alternate lengths are required.

### SLIMLINE INJECTION MOULDING CONNECTIONS | IP68



REQUIRES FITTING AT FACTORY.

EXACT LENGTH REQUIRED BEFORE PRODUCTION



SIDE FEED



BOTTOM FEED



TOP END FEED



END CAP

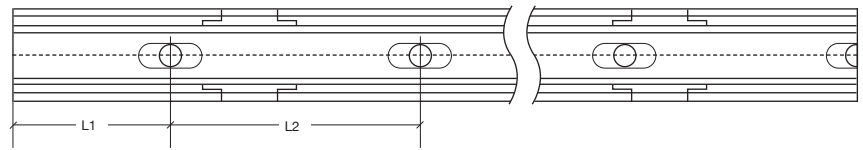


300MM FLEXIBLE  
CONNECTOR

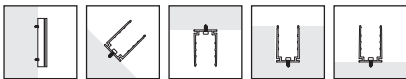
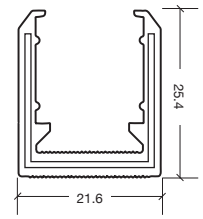
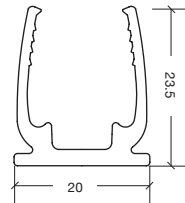
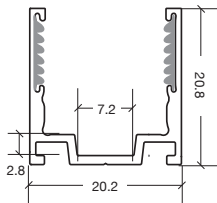


T FEED

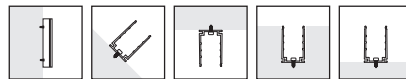
NEON ARC | MOUNTING ACCESSORIES



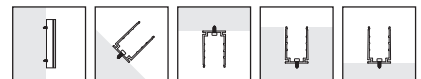
CODE	ACCESSORY	L1	L2	HOLE DIMENSIONS	HOLE NUMBER
BL-LS-4815	SERRATED ALUMINIUM PROFILE 1M	100mm	200mm	4 × 10mm	5
BL-LS-4816	SERRATED ALUMINIUM PROFILE 2M	100mm	200mm	4 × 10mm	10
BL-LS-4817	SERRATED ALUMINIUM CLIP 20MM	10mm	-	4 × 10mm	1
BL-LS-4818	THICKENED PLASTIC CLIP 35MM	17.5mm	-	4.5 × 8mm	1
BL-LS-4819	THICKENED PLASTIC PROFILE 1 METRE	100mm	200mm	4.5 × 8mm	5
BL-LS-4820	THICKENED PLASTIC PROFILE 2 METRE	100mm	200mm	4.5 × 8mm	10
BL-LS-4821W	ANOLE BENDABLE PROFILE WHITE 1 METRE	100mm	200mm	3mm	5
BL-LS-4821B	ANOLE BENDABLE PROFILE BLACK 1 METRE	100mm	200mm	3mm	5



SERRATED ALUMINIUM  
PROFILE & MOUNTING CLIP



THICKENED PLASTIC  
PROFILE & CLIP



ANOLE BENDABLE PROFILE